



P.L. Light Systems Canada Inc. Warranty

Warranty Policy

The warranty on P.L. Light Systems Canada Inc. PL2000 fixture and components are Two years from the date of purchase.

If within Two (2) years of purchase, our product fails due to a defect in material or workmanship, P.L. Light Systems Canada Inc. will repair or replace it free of charge. The warranty does not apply to: (a) damage caused by accident, abuse, mishandling, vandalism; (b) units which have been subject to unauthorized repair, opened or taken apart, other than the normal relamping; (c) units not installed in accordance with directions; (d) damages exceeding the cost of the product. We reserve the right to charge for repair or replacement costs of items damaged through no fault of P.L. Light Systems Canada Inc.. An estimate for such repairs will be quoted to the buyer approval prior to commencing work at a minimum cost to the buyer.

The obligation of this warranty is limited to repairing or replacing all or any part of the product which in the opinion of P.L. Light Systems Canada Inc. shall be proved defective in materials or workmanship under normal use and service.

In no case shall P.L. Light Systems Canada Inc. be liable for any special or consequential damages, labour, repair or removal of defective part, or any other costs or warranty, expressed or implied.

All returns must be shipped prepaid by the buyer.

All lamps carry a one year warranty from the date of purchase when operated on approved ballast.

Return Material Authorization (RMA)

Warranty Period

Fixture Components Only: 2 Years from Date of Purchase
Lamps: 1 Year from Date of Purchase
P.L. Light Systems Canada Inc. will determine warranty eligibility of returned defective items and provide the buyer with an RMA number.

Notice of Defective Material and/or Short Shipped Material

Notice of defective or short-shipped material must be made by the buyer to P.L. Light Systems Canada Inc. in writing within 24 hours from time of delivery. Failure to give notice within 24 hours shall constitute an absolute unconditional waiver by the buyer.

RMA Number Required

Buyers must send items freight prepaid.
Buyer will be given an RMA number for return authorization for defective material to be noted on all material being returned.

Return defective material and warranty items to:
P.L. Light Systems Canada Inc.
4800 Hinan Drive
Beamsville, ON L0R 1B1

T. (905) 563-4133 / 1-800-263-0213
F. (905) 563-0445
info@pllight.com

**P.L. LIGHT SYSTEMS • 4800 HINAN DRIVE, BEAMSVILLE, ON, CANADA L0R 1B1
TEL 905.563.4133 • TOLL FREE: 1.800.263.0213 • FAX 905.563.0445**

www.pllight.com



P.L. LIGHT SYSTEMS

Mounting Instructions

Before installing the fixtures, refer to your drawings attached to your quotation showing all required materials for mounting. These drawings show dimensions such as, distance between fixtures, distance between rows of fixtures, and positioning of the first fixture in a row. You should refer to these drawings at all times during installation for a guaranteed uniformity and light level.

STEP 1

P.L. Light Systems can provide you with Steel Track (Item #1 on the drawing labelled PL2000 Track Assembly) to mount your fixtures. Steel C-Brackets (Item #2) are mounted to your greenhouse with the open side facing either left or right (bolts and nuts are not included), at every truss support, based on post spacing. The track is then laid into the brackets. The track can also be laid over the greenhouse trusses if applicable. To fasten the track, it is recommended to use self-tapping screws.

STEP 2

The track coupling (Item #3) should be used when more than one (1) length of track is required. Slide half the coupling inside one end of the track, securing them with bolts and nuts or by some other means. The second length of track is then slid over the extended end of the coupling. Secure this piece the same way as the first length. Repeat this procedure until the desired length of mounting track is achieved.

DO NOT ASSEMBLE TRACKS BEFORE MOUNTING ON TO THE GREENHOUSE STRUCTURE. EACH LENGTH SHOULD BE MOUNTED INDIVIDUALLY TO THE GREENHOUSE STRUCTURE.

STEP 3

P.L. Light Systems can provide you with Steel C-Brackets or a mounting hardware consisting of eyebolts and chain. If you have been supplied with C-Brackets, proceed to STEP 3A. If you purchased the Single Mounting Hardware, proceed to STEP 3B. If you have been supplied with Perpendicular C-Brackets, refer to Drawing PL2000 600W/1000W Perpendicular Mounting.

STEP 3A

The Steel C-Brackets (Item #2) will be attached to the fixture (Item #4) using the bolts and nuts provided. Slide one of the bolts into the center groove of the steel body approximately one inch from the end of the fixture. Set the C-Bracket in position and tighten the nut until the desired torque is achieved. DO NOT finger tighten as this could cause the bracket to bend or slide off when it is hanging from the track. Repeat this process for the second bracket.

STEP 3B

****Refer to Drawing Single Mounting Hardware****

Your Single Mounting Hardware kit contains (Item #1) 2 self-tapping hooks, (Item #2) 2 standard hooks, (Item #3) 4 nuts and (Item #4) 2 pieces of #12 chain. Begin by threading 2 nuts onto each of the standard hooks. One should be threaded as high up the hook as possible and the second nearly flush on the bottom. Slide the hook into the center groove of the steel body using the bottom nut approximately one inch from the end of the fixture. Turn the hook until it is tight, and then tighten the top nut. You have two options to hang the fixture. The chain can be hung over a mounting support and then slip the two ends onto the hooks on the fixture, or you can drill the self tapping hooks into your mounting support and then hang one end of the chain from them and the second end slips onto the hooks on the fixture.

P.L. LIGHT SYSTEMS • 4800 HINAN DRIVE, BEAMSVILLE, ON, CANADA L0R 1B1
TEL 905.563.4133 • TOLL FREE: 1.800.263.0213 • FAX 905.563.0445

www.pllight.com



ELECTRICAL INSTALLATION

ALL ELECTRICAL CONNECTIONS SHOULD BE INSTALLED BY A CERTIFIED ELECTRICIAN

STEP 1

It is important to check the label on the fixture(s) for the voltage and amperage. The voltage on the label should be the same as the voltage from the electrical supply. Proceed to the next step only if the voltage and amperage correspond to your supply and electrical code. If not, please call P.L. Light Systems immediately at 1-800-263-0213.

STEP 2

Once the voltage has been verified, the power cable can be inserted into the endplate (Item #5) of the fixture (supplied, but may be packed separately). Use cable strain relief to secure the power cable to the endplate. Your electrician should supply the strain relief. Once the cable is secure, you can proceed to wire the fixture. Once wired, the endplate is then fastened to the fixture with four ½" self tapping screws which are also supplied.

DUE TO DIFFERENT ELECTRICAL CODES IN CERTAIN AREAS, THE WIRING OF THE FIXTURE(S) IN THIS MANUAL MAY NOT APPLY. MAKE SURE THE ELECTRICAL CODES PERMIT THIS PROCEDURE BEFORE WIRING THE FIXTURE(S) ACCORDING TO THIS MANUAL. PLEASE FOLLOW YOUR LOCAL ELECTRICAL CODES WHEN WIRING YOUR FIXTURE(S).

Please feel free to contact us at any time if you are experiencing any problems.

REFLECTOR MOUNTING PROCEDURE

To attach the reflector, turn the locking fastener to the side and slide the reflector adapter over the collar attached to the fixture. Then lock the reflector in place by turning the fastener over the top of the reflector adapter. (See "The New Collar Design" Page 13)

METAL HALIDE REFLECTOR

If you have purchased a Metal Halide fixture, refer to the drawing marked PL2000 Metal Halide Reflector. The reflector comes with a 4mm, heat resistant, piece of tempered glass, and three or four hitch pins depending on the reflector type. To attach the 1000W MH reflector, you will first have to screw in the Metal Halide bulb. Then attach the reflector to the fixture, now using the 4 hitch pins provided place one on each corner of the reflector. If you have Medium Metal Halide or a Deep Metal Halide they will come pre-assembled. To attach the reflector you will first have to screw in the Metal Halide bulb. After this has been done, follow the instructions above for the reflector mounting procedure.

Should the glass plate need to be removed, let the unit cool down if it has been operating, and hold the glass plate in place and simply pull out the Hitch Pins from the side of the reflector.



TROUBLE SHOOTING GUIDE

FOR A SIMPLE STEP-BY-STEP TROUBLE SHOOTING GUIDE, REFER TO THE FLOWCHART ON THE NEXT PAGE.

NORMAL END OF LIFE OF BULBS:

- Bulb cycles on and off.
- Blackening at ends of arc tube.
- Brownish tinge on outer glass envelope.

IF YOU DISCOVER A FIXTURE NOT WORKING, DISCONNECT POWER IMMEDIATELY, THUS AVOIDING CAUSING DAMAGE TO INTERNAL COMPONENTS

CHECKING POWER SUPPLY:

- Check power switches.
- Check Circuit breakers/fuses.
- Check photo/timer controls.
- Correct line voltage indicated on fixture label.
- Check your computer settings if controlled by computer.

DISCONNECT POWER BEFORE OPENING A FIXTURE OR REPLACING A BULB

When ordering replacement parts please indicate the part number and name of the defective parts.

CLEANING YOUR FIXTURE

It is recommended that you clean your bulbs and reflectors at least once a year.

TURN OFF THE POWER AND LET THE BULB COOL DOWN FIRST

Use lukewarm water mixed with household detergent and a soft cloth. Make sure that the bulb is clean and dry before reinserting it back in the fixture. If you experience any problems feel free to contact us by phone, fax or e-mail.

**P.L. Light Systems Canada Inc.
4800 Hinan Drive
Beamsville, ON L0R 1B1**

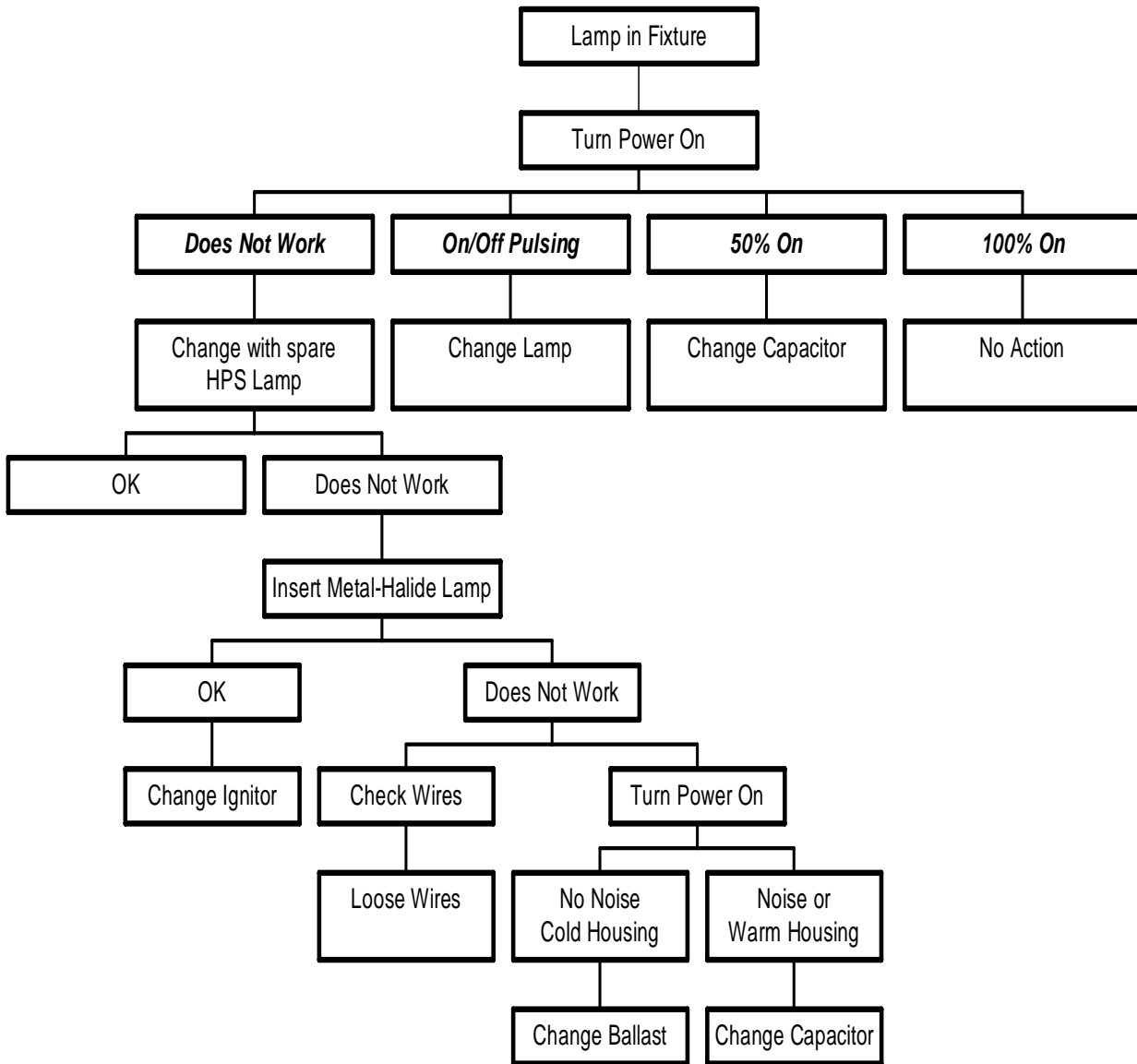
T. (905) 563-4133 / 1-800-263-0213

F. (905) 563-0445

info@pllight.com

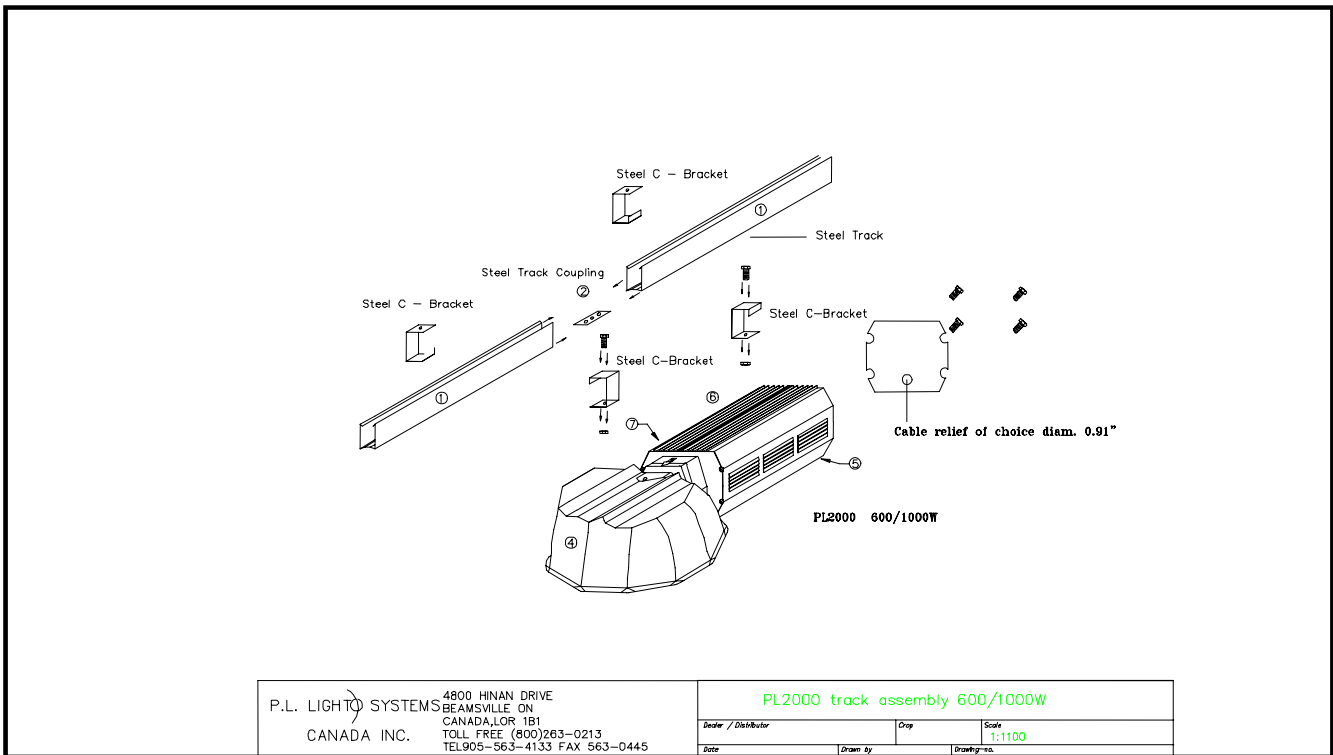


Troubleshooting Step by Step





DRAWING – PL2000 600/1000W Track Assembly



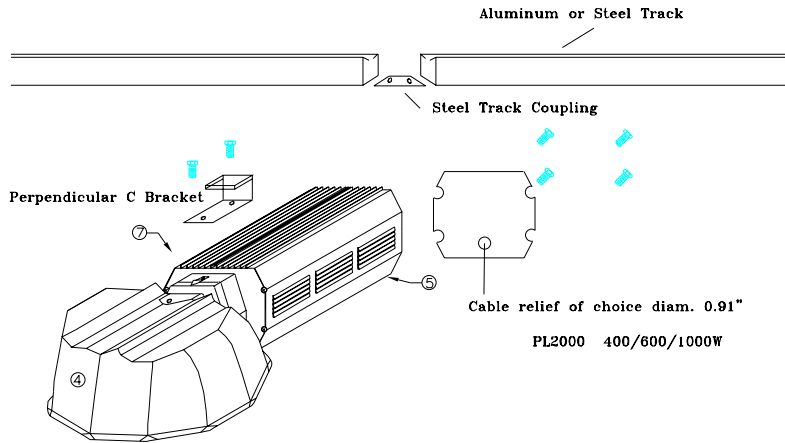
P.L. LIGHT SYSTEMS • 4800 HINAN DRIVE, BEAMSVILLE, ON, CANADA L0R 1B1
 TEL 905.563.4133 • TOLL FREE: 1.800.263.0213 • FAX 905.563.0445

www.pllight.com



DRAWING – PL2000 600/1000W Perpendicular Mounting

JUST FOR PERPENDICULAR MOUNTING



PL2000 400/600/1000W

Note. The Bracket must be mounted flush with the front of the fixture to maintain balance

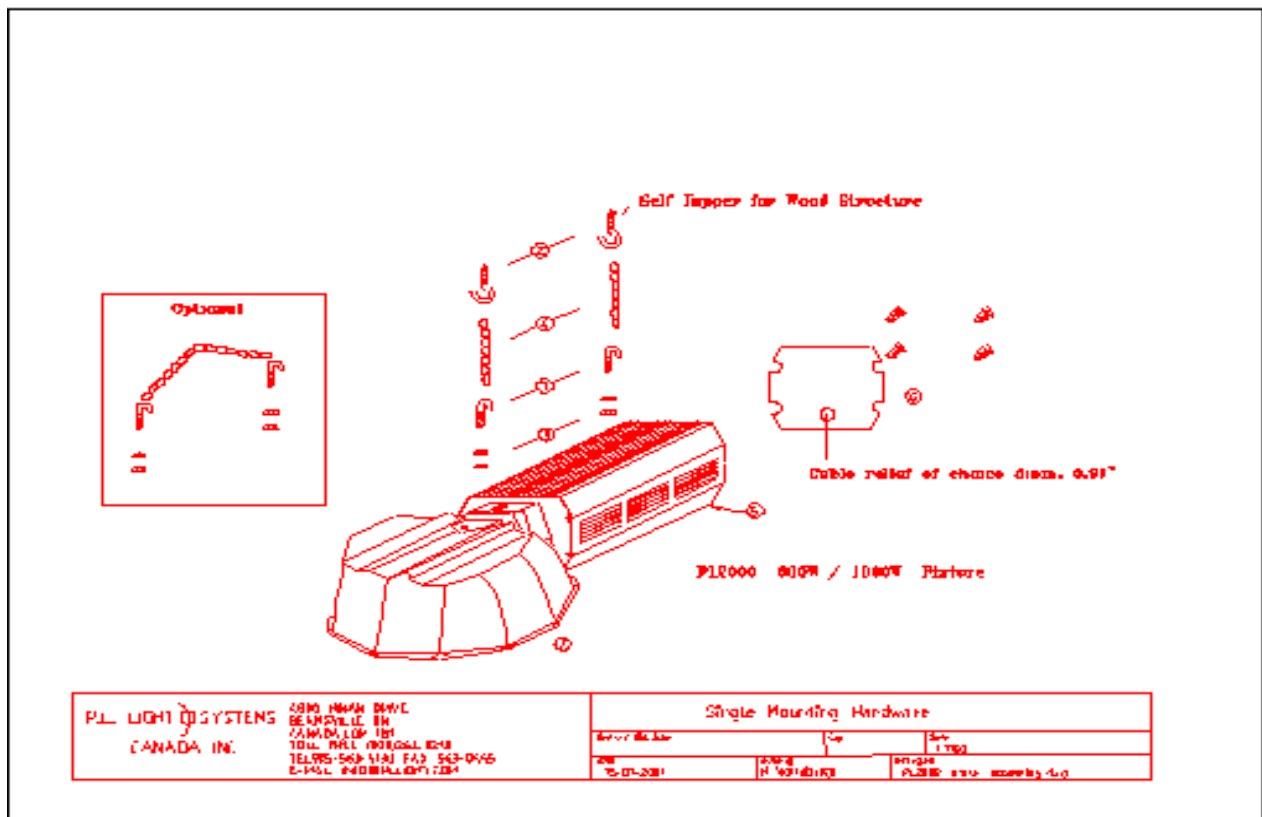
P.L. LIGHT SYSTEMS CANADA INC.	4800 HINAN DRIVE BEAMSVILLE ON CANADA L0R 1B1 TOLL FREE (800)263-0213 TEL905-563-4133 FAX 563-0445 E-MAIL INFO@PLLIGHT.COM	PL2000 track assembly 600/1000W	
	Dealer / Distributor	Crop	Scale 1:1100
	Date 15-01-2001	Drawn by H Vollebregt	Drawing-no PL2000 track assembly.dwg

P.L. LIGHT SYSTEMS • 4800 HINAN DRIVE, BEAMSVILLE, ON, CANADA L0R 1B1
 TEL 905.563.4133 • TOLL FREE: 1.800.263.0213 • FAX 905.563.0445

www.pllight.com



DRAWING – Single Mounting Hardware



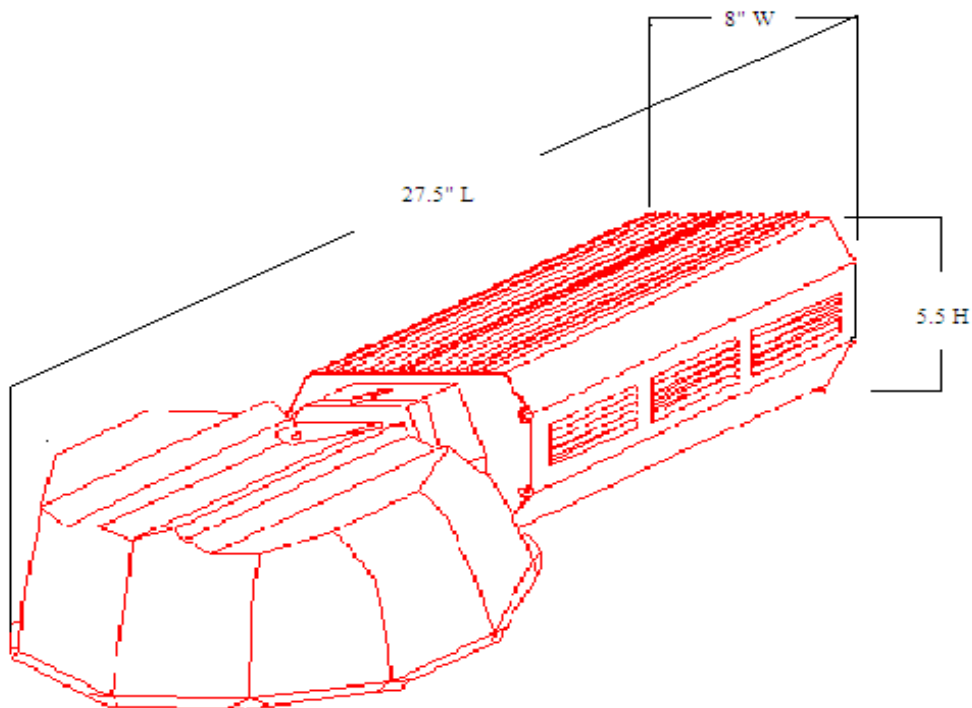
**P.L. LIGHT SYSTEMS • 4800 HINAN DRIVE, BEAMSVILLE, ON, CANADA L0R 1B1
 TEL 905.563.4133 • TOLL FREE: 1.800.263.0213 • FAX 905.563.0445**

www.plight.com



P.L. LIGHT SYSTEMS

Demension- PL2000 Fixture with MIDI reflector.

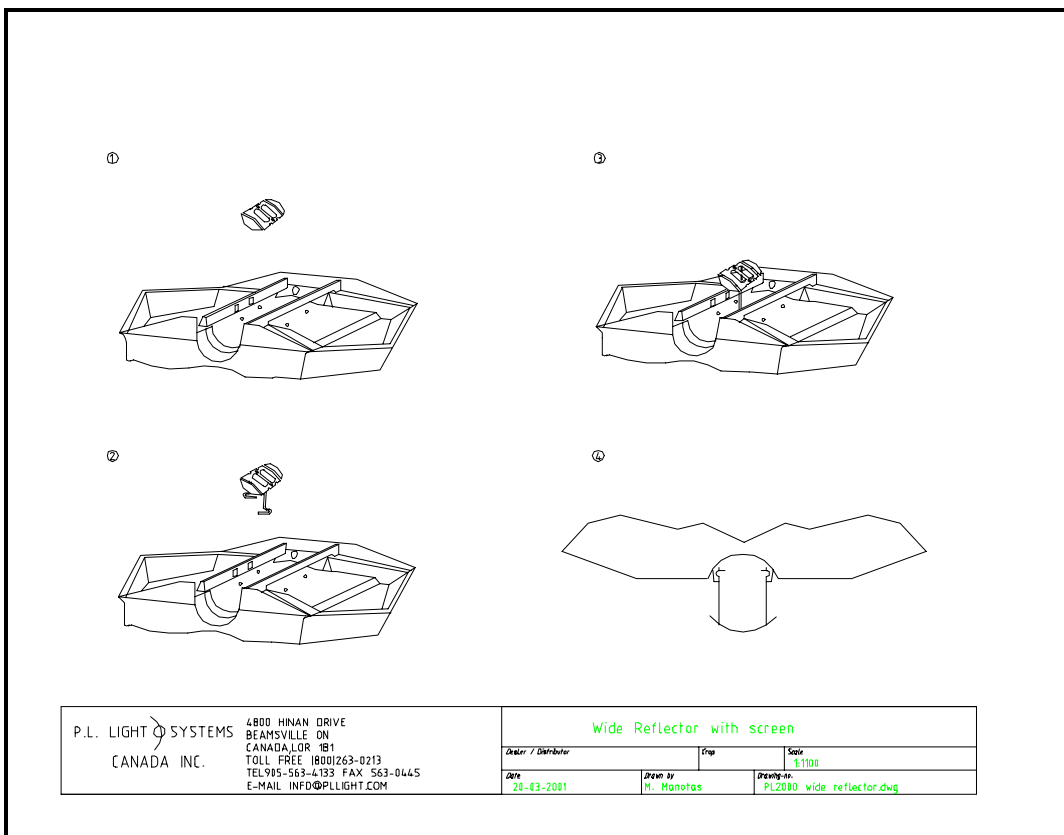


P.L. LIGHT SYSTEMS • 4800 HINAN DRIVE, BEAMSVILLE, ON, CANADA L0R 1B1
TEL 905.563.4133 • TOLL FREE: 1.800.263.0213 • FAX 905.563.0445

www.pllight.com



DRAWING - Wide Reflector with Screen



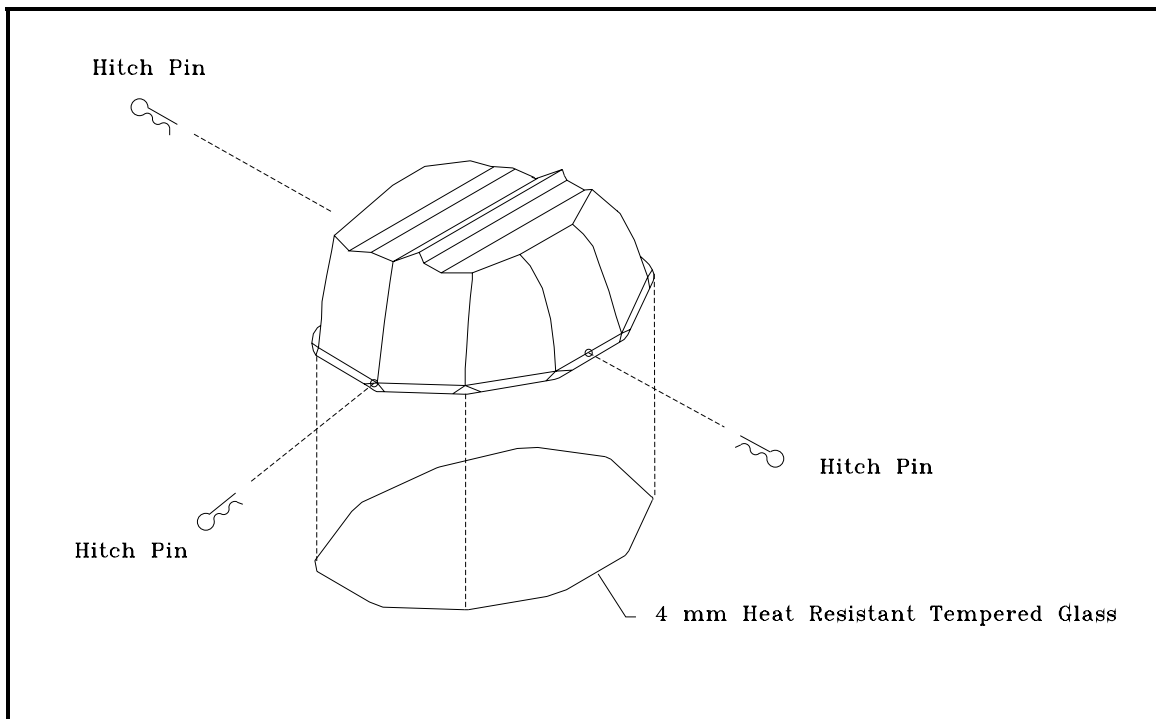
P.L. LIGHT SYSTEMS • 4800 HINAN DRIVE, BEAMSVILLE, ON, CANADA L0R 1B1
 TEL 905.563.4133 • TOLL FREE: 1.800.263.0213 • FAX 905.563.0445

www.pllight.com



P.L. LIGHT SYSTEMS

DRAWING - PL2000 Metal Halide Reflector



P.L. LIGHT SYSTEMS • 4800 HINAN DRIVE, BEAMSVILLE, ON, CANADA L0R 1B1
TEL 905.563.4133 • TOLL FREE: 1.800.263.0213 • FAX 905.563.0445

www.pllight.com